



UI Bulletin #191c

Subject: Cautionary – NO Drill/Air Bag Zones – Electric Cargo Van
Models Affected: BrightDrop Electric Vans 400_600
Models Years Affected: 2022 and beyond
Origination Date: May 3, 2023
Revision Date: September 11, 2024

ADVISORY:

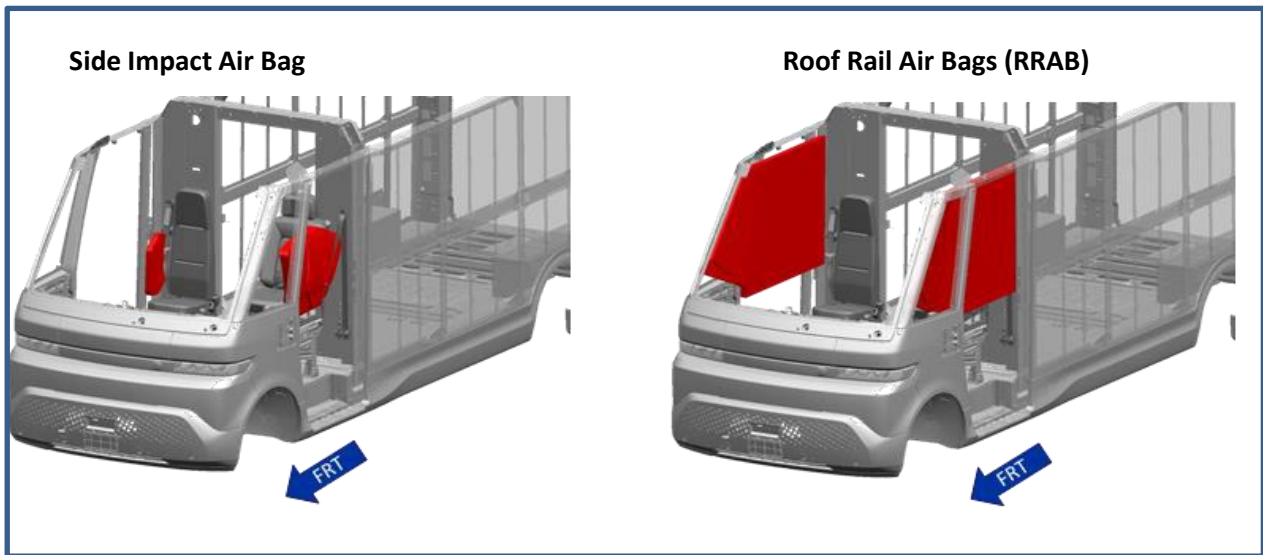
NOTE: The information in this bulletin as it pertains to the zoning areas is for general reference only. If precise location or area definitions are needed for the purposes of designing or mounting of upfit equipment or components a Math Data request is required.

Concern:

Upfitters need the locational information for the air bag deployment and the NO DRILL zones for the purposes of installing equipment.

Recommendation:

Air Bag Deploy Zones:

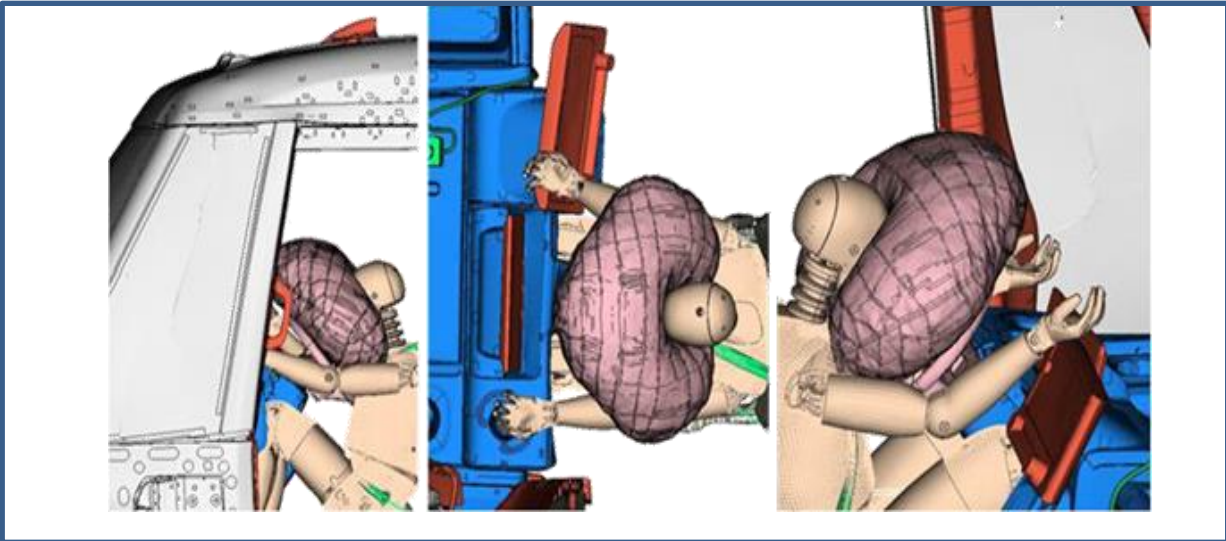


General Motors Upfitter Integration

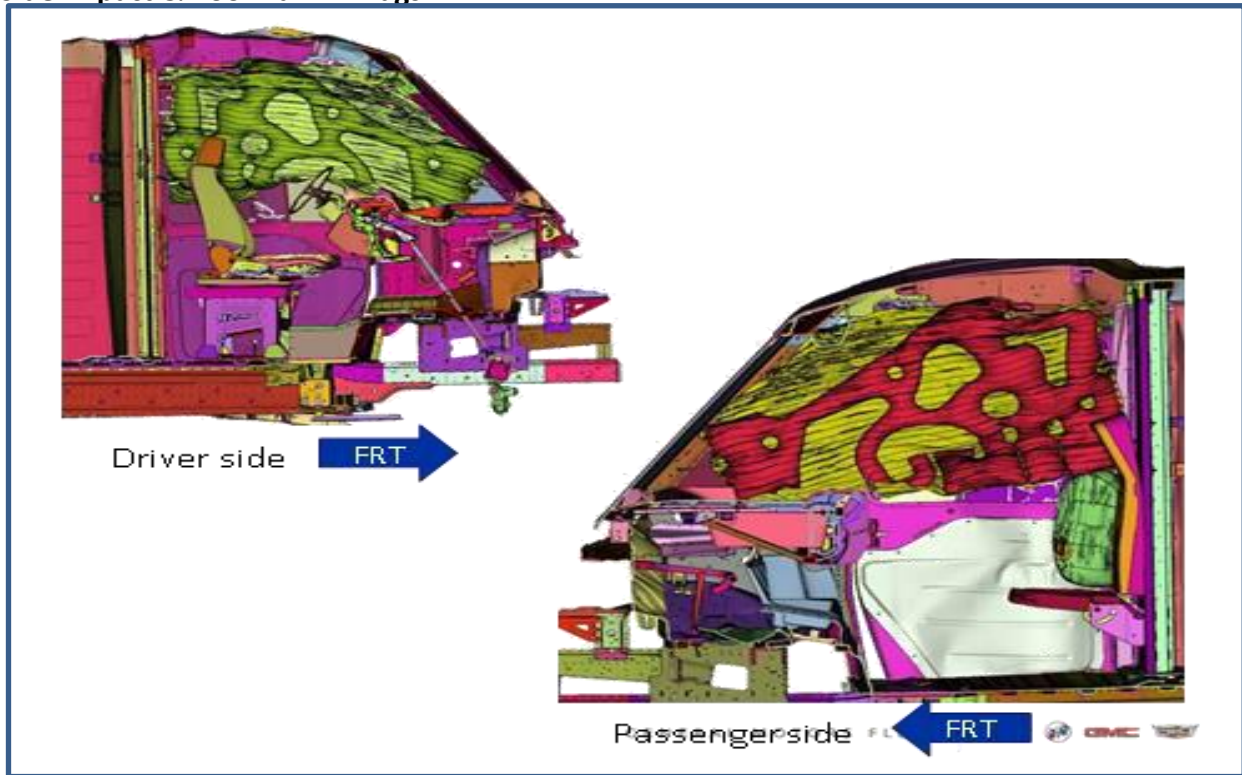
<http://www.gmupfitter.com>



Driver Air Bag



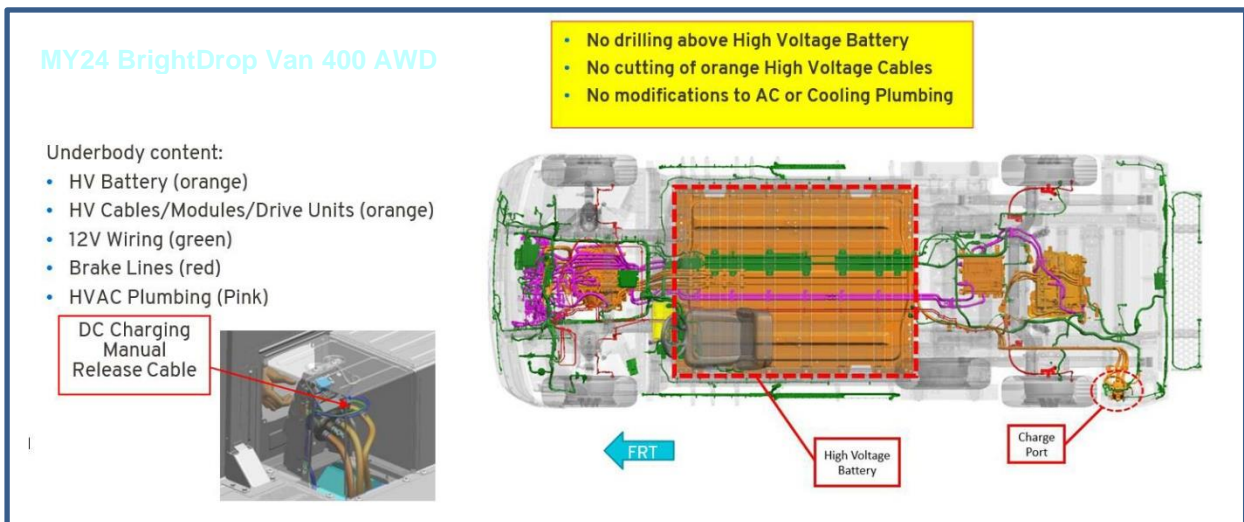
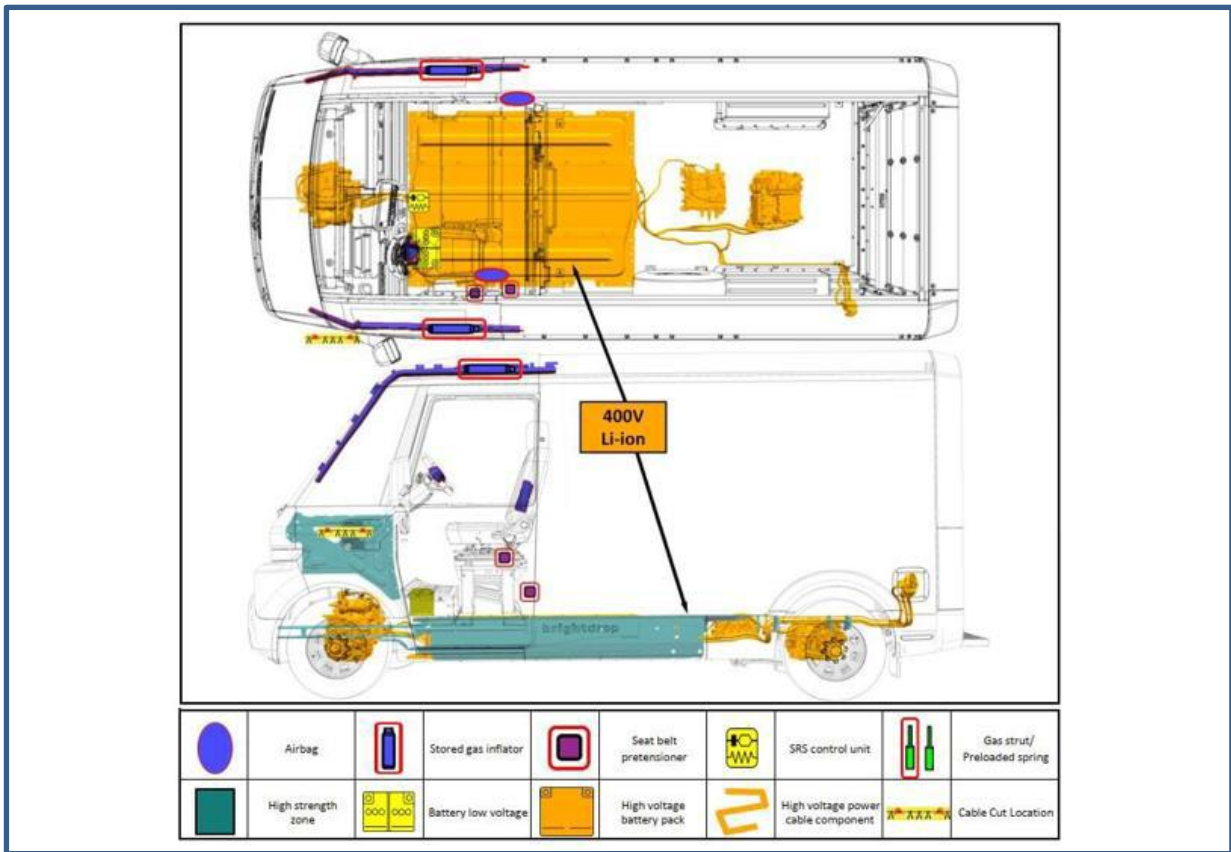
Side Impact & Roof Rail Air Bags





NO Drill Zones

MY24 BrightDrop 400 AWD





MY22 BrightDrop 600 FWD

	Airbag		Stored gas inflator		Seat belt pretensioner		SRS control unit		Pedestrian protection active system
	Automatic rollover protection system		Gas strut/Preloaded spring		High strength zone		Zone requiring special attention		
	Battery low voltage		Ultra capacitor, low voltage		Fuel tank		Gas tank		Safety valve
	High voltage battery pack		High voltage power cable component		High voltage disconnect		Fuse box disabling high voltage system		Ultra capacitor, high voltage
DO NOT CUT ANY ORANGE COLORED HIGH VOLTAGE CABLES DO NOT CUT ANY ORANGE COLORED HIGH VOLTAGE CABLES.						Identification Number 5G5-21101	Version Number 1	Page Number 1	

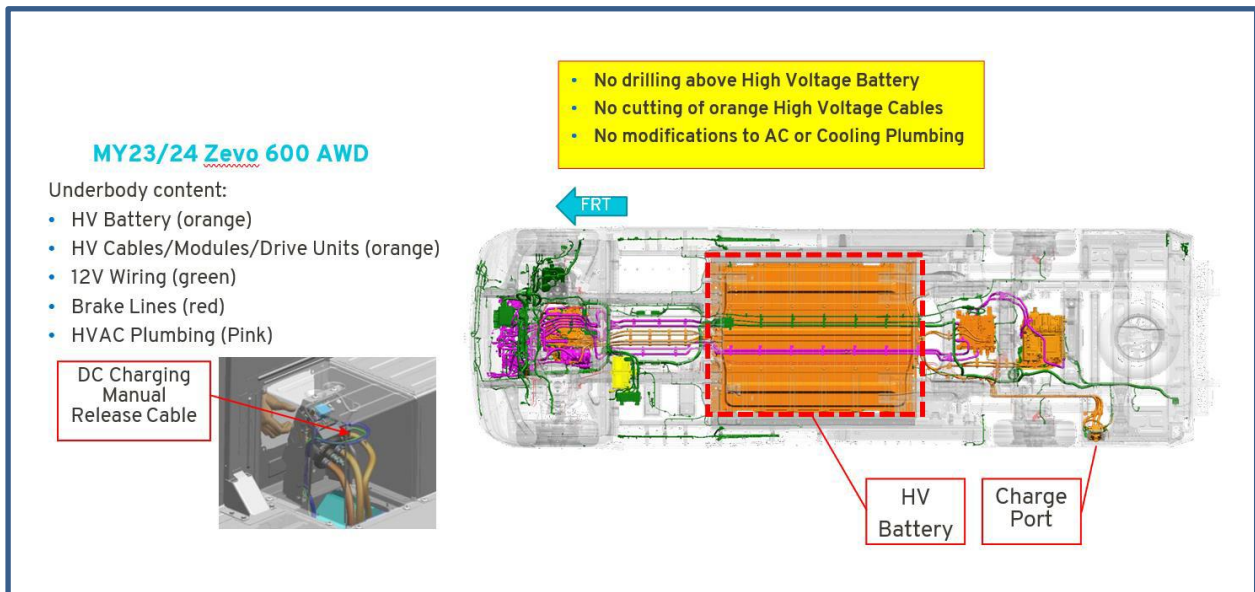
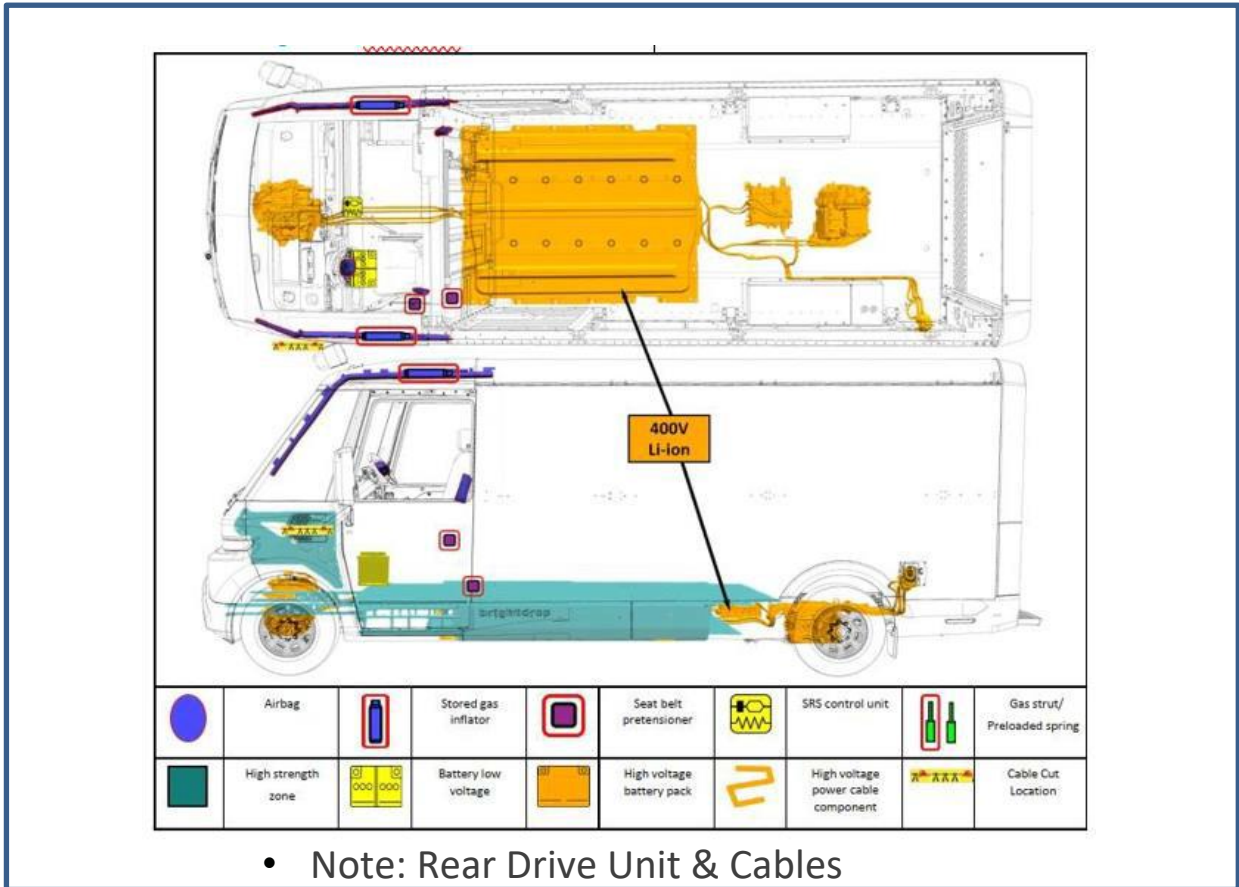
General Motors Upfitter Integration

<http://www.gmupfitter.com>



UI Bulletin #191c

MY23 and later BrightDrop 600 AWD

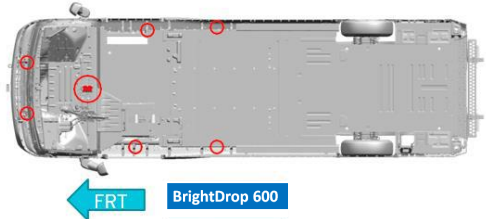




Impact Sensors & Antennas


SRS Airbag Module & Impact Sensors

- SRS Airbag module centrally located under Lower IP Bin
- 6 Impact Sensors



Security Access Antennas

- 8 Key Fob Antennas
- Covering antennas will impair keyless entry/exit performance
- Keyed lock access at rear door



Additional Information:

As noted at the start of this document this information is reference only...it is not scale nor can be used in the design or developed of any after-market or upfitter equipment. For accurate dimensional and locational information, please submit a request for Math Data (CAD) to GM Upfitter Integration via the contact us form.

<https://www.gmupfitter.com/contact/>

0016X